

Vehicle Identification

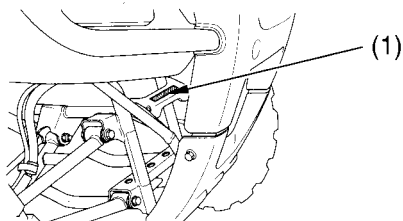
Serial Numbers

The frame and engine serial numbers and key number may be required when ordering replacement parts. Record the numbers here for your reference.

The frame number (1) is stamped on the front of the frame.

FRAME NO. _____

FRONT

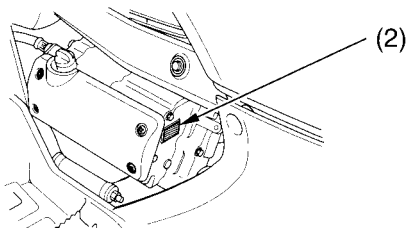


(1) frame number

The engine number (2) is stamped on the upper side of the rear crankcase.

ENGINE NO. _____

LEFT SIDE



(2) engine number