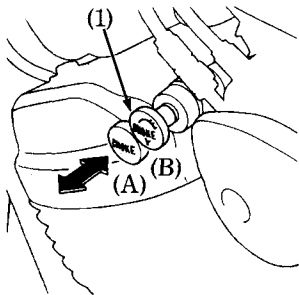


Starting Procedure

1. Pull the choke knob (1) out to the Fully ON position (A), if the engine is cold.
2. Press the starter button.
3. Warm up the engine until it runs smoothly, with the choke knob Fully OFF.

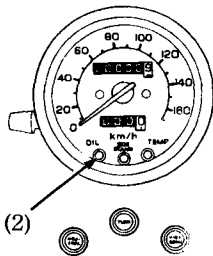


(1) Choke knob

(A) Fully ON
(B) Fully OFF

CAUTION:

- * The red low oil pressure indicator should go off a few seconds after the engine starts. If the light stays on, stop the engine immediately and check engine oil level. Operating the engine with insufficient oil pressure can cause serious engine damage.



(2) Low oil pressure indicator