

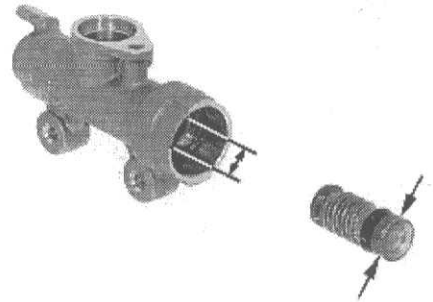
INSPECTION

Check the piston boot, primary cup and secondary cup for fatigue or damage.
 Check the master cylinder and piston for abnormal scratches.
 Measure the master cylinder I. D.

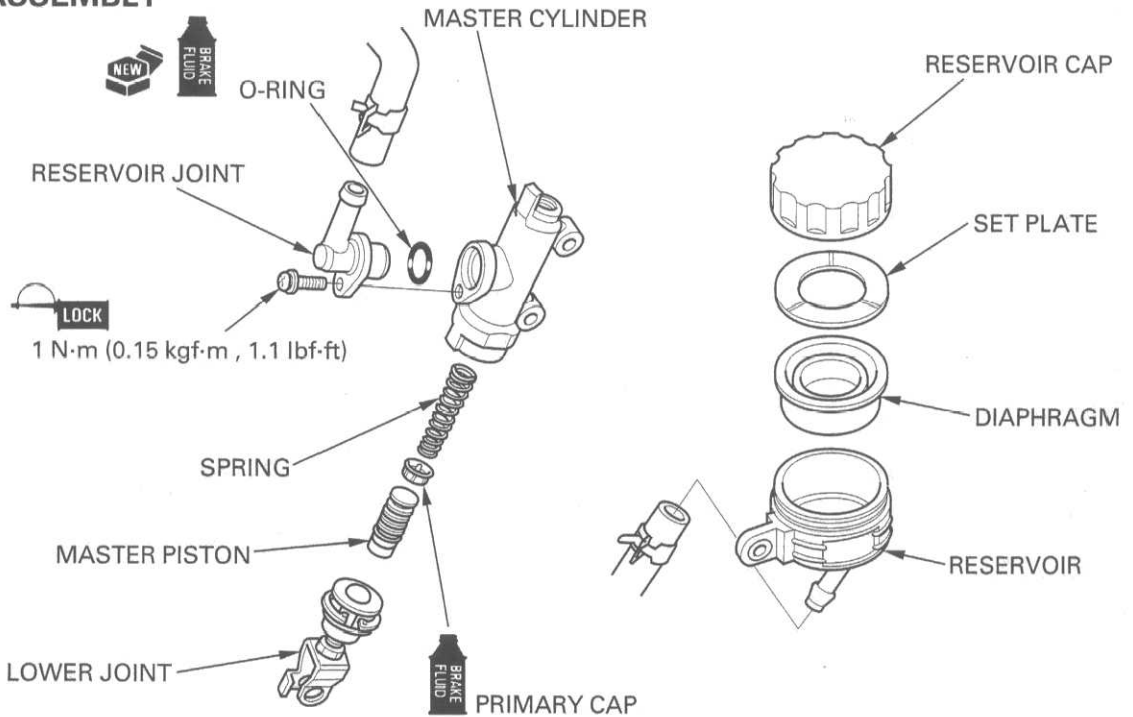
SERVICE LIMIT: 14.055 mm (0.5533 in)

Measure the master cylinder piston O. D.

SERVICE LIMIT: 13.945 mm (0.5490 in)



ASSEMBLY



CAUTION:

Keep the piston, cups, spring, snap ring and boot as a set; do not substitute individual parts.

Coat all parts with clean brake fluid before assembly.
 Dip the piston in brake fluid.
 Install the primary cup to the spring.
 Install the spring and piston assembly into the master cylinder.
 Apply grease to the piston contact area of the push rod.

CAUTION:

When installing the cups, do not allow the lips to turn inside out.

