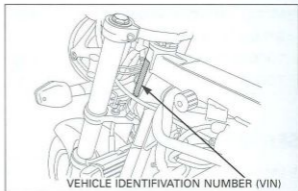
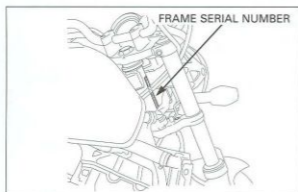


GENERAL INFORMATION

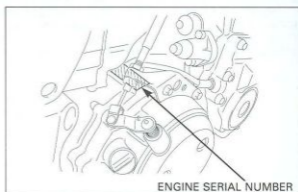
MODEL IDENTIFICATION



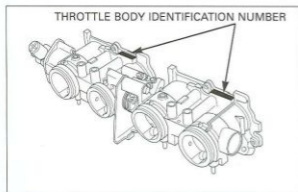
The Vehicle Identification Number (VIN) is located on the left side of the frame near the steering head.



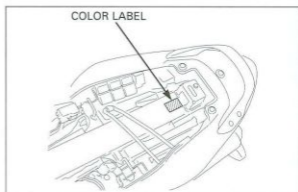
The engine serial number is stamped on the right side of the upper crankcase.



The frame serial number is stamped on the right side of the steering head.



The throttle body identification number is stamped on the intake side of the throttle body as shown.



The color label is attached as shown. When ordering color-coded parts, always specify the designated color code.